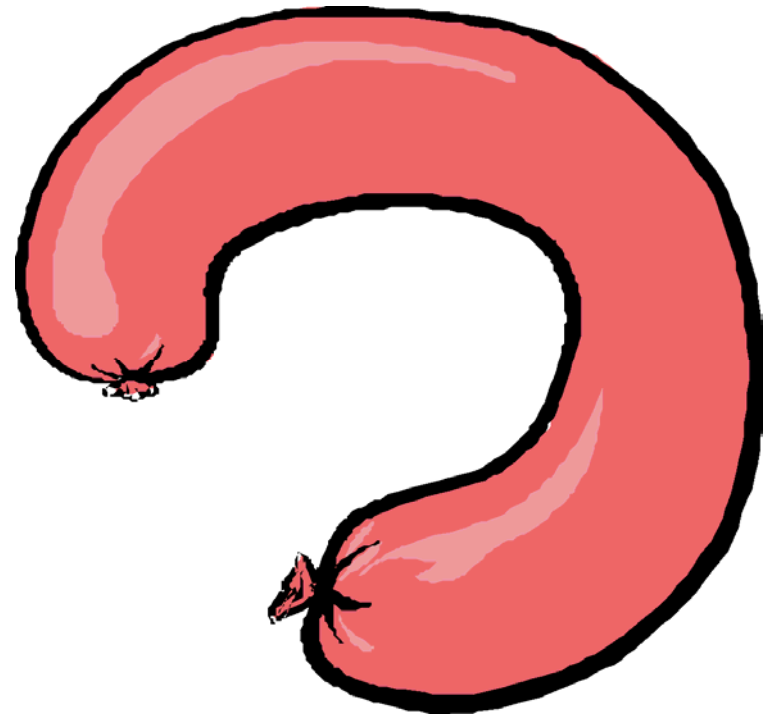
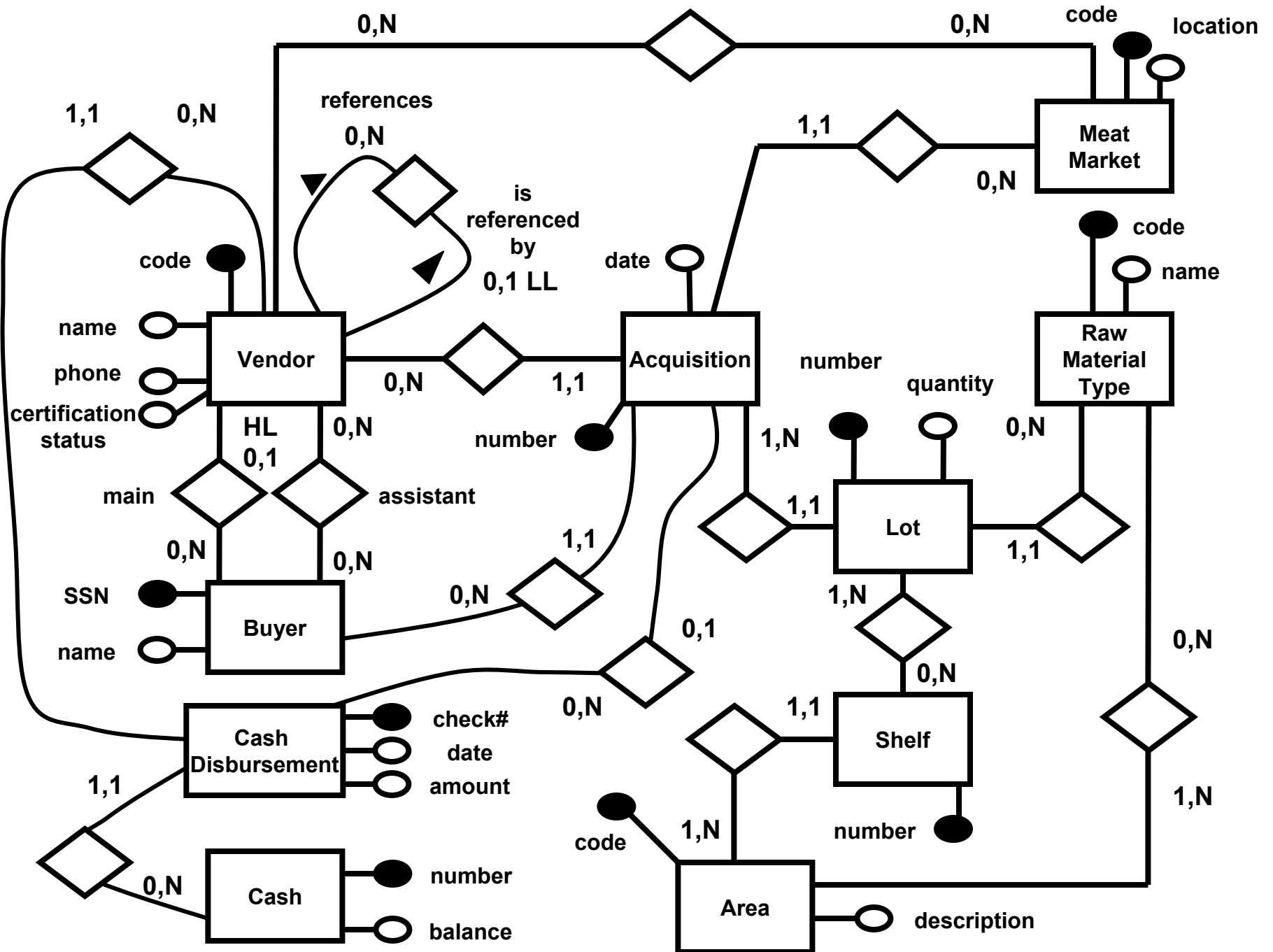


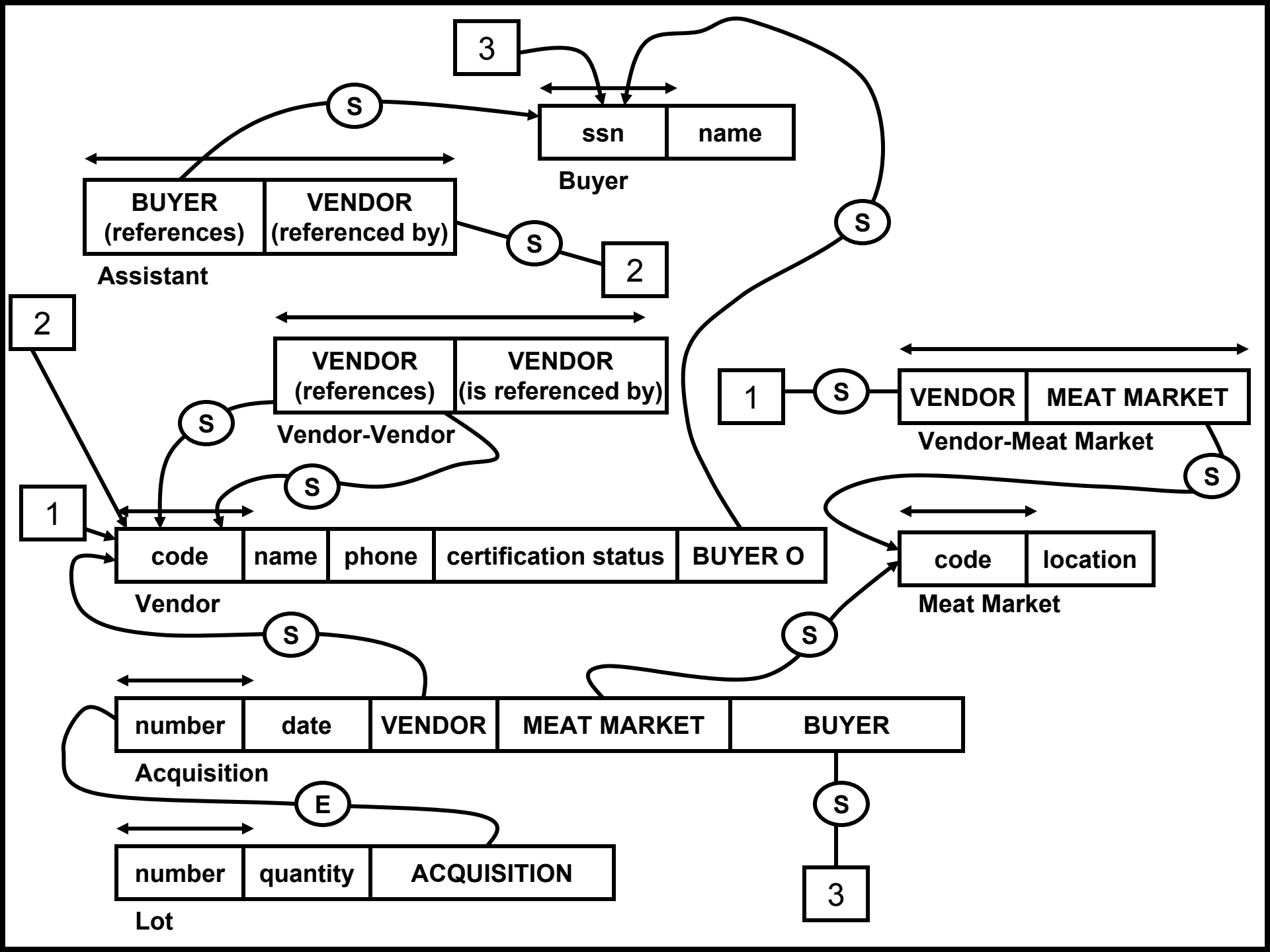
Newark Sausages



**Project 1
Acct302 -- Spring 2009**

**Solution
Package**





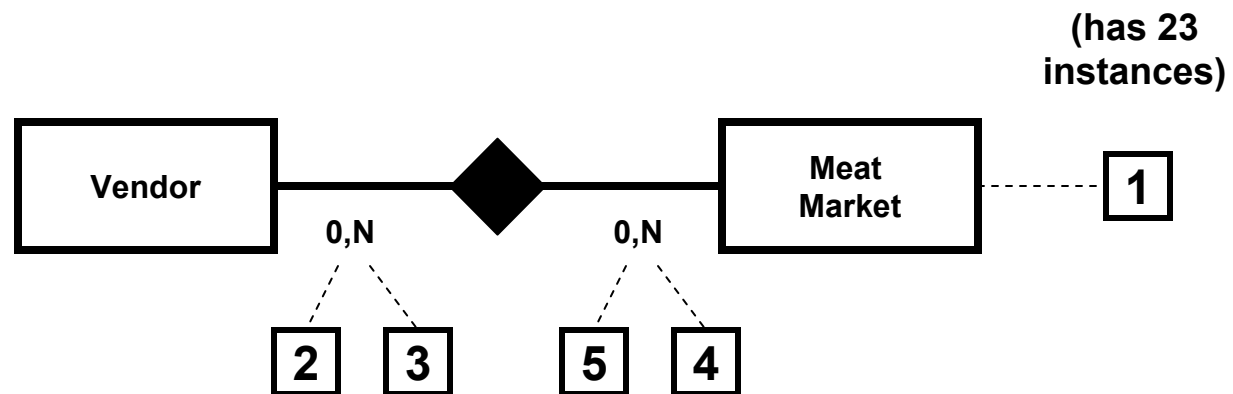
1 Currently, we buy materials at 23 different meat markets

2 We actually keep information for (a) certified vendors, (b) non-certified vendors, and (c) vendors that are going through the certification process. We record a vendor's status in the certification-status attribute. For each certified vendor, we record at which meat markets they sell their ingredients. → we only record "meat market" information for the certified vendors; participation of vendor in the relationship is therefore optional.

3 Most certified vendors sell at a number of meat markets.

4 More than ten of our certified vendors sell at the Elkton meat market (Maryland).

5 There is a new meat market in Chadd's Ford (PA) that we have entered in our database (code: CFMM). However, we have not bought anything yet from CFMM and we thus have not recorded any vendors for CFMM yet.

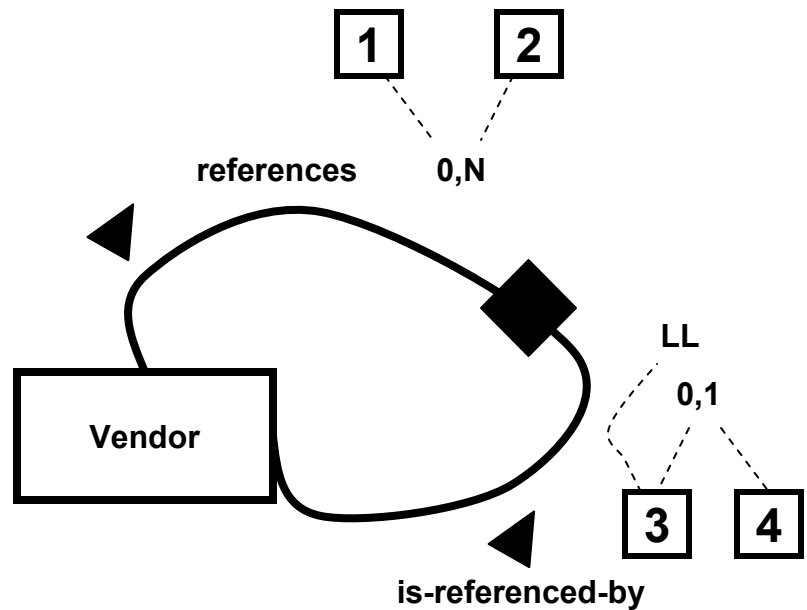


1 Obviously, we only accept references from certified vendors.

2 However, a vendor can reference many (potential) vendors. For example, “Wilmington’s Exotic Animals Farm” provided us seven new vendor references last month.

3 About 25% of our vendors have been referenced by other vendors.

4 A vendor can be referenced only once (by another vendor)



1

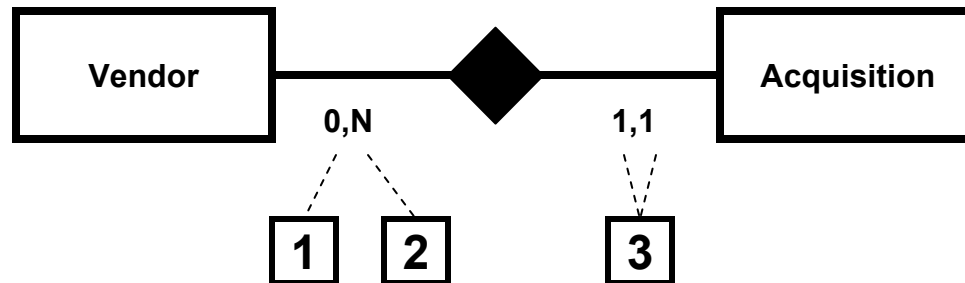
We actually keep information for (a) certified vendors, (b) non-certified vendors, and (c) vendors that are going through the certification process. Remember that we can only buy raw materials from certified vendors.

2

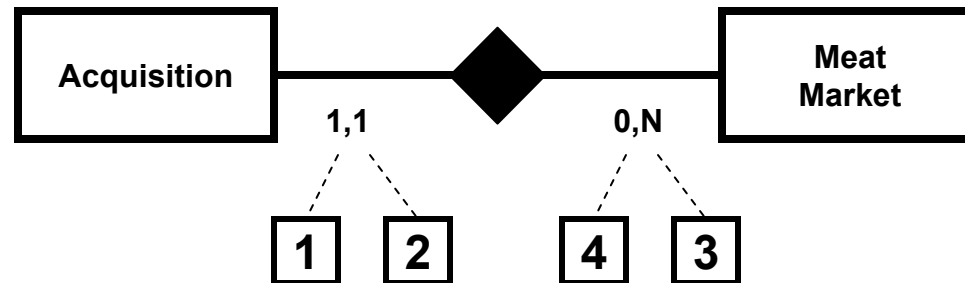
We buy repeatedly from most of our certified vendors.

3

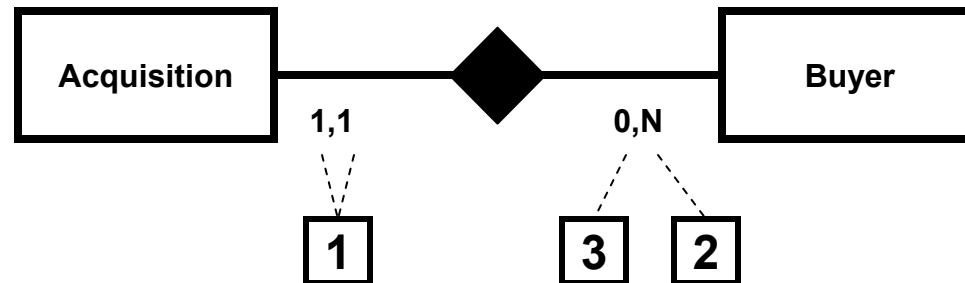
There is exactly one vendor per acquisition transaction.



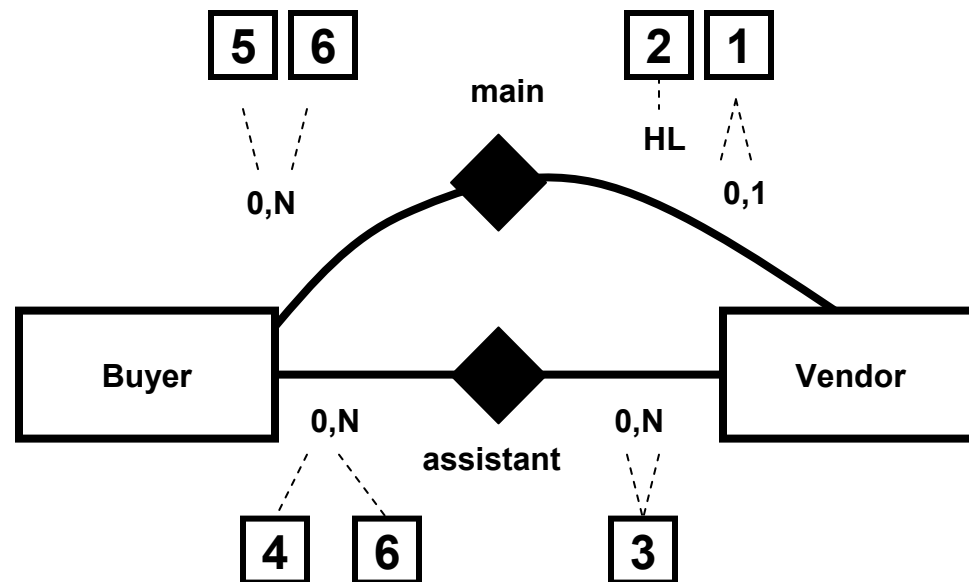
- 1 We buy (acquisition) all our raw materials at meat markets.
- 2 We can only record one meat market for an acquisition transaction.
- 3 We have hundreds of transactions for the “Fox Chase” meat market every year.
- 4 However, we haven’t bought anything yet at the “Jennersville” meat market (PA). We recorded the “Jennersville” meat market in our database last week.



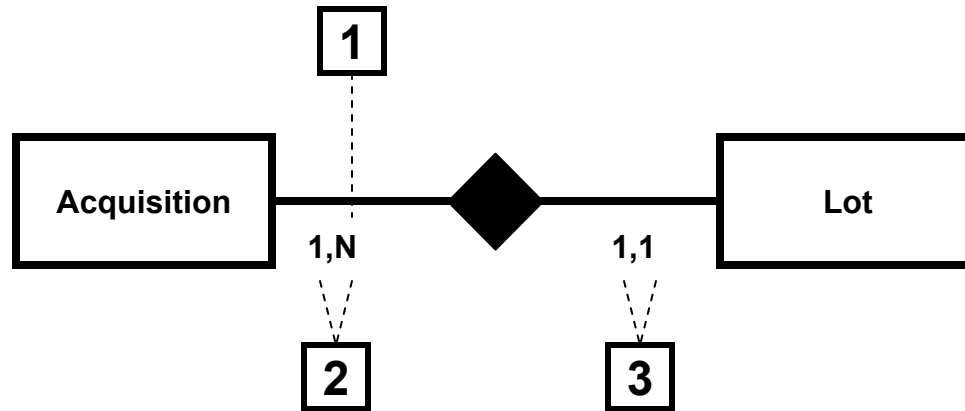
- 1 Exactly one buyer is accountable for each acquisition.
- 2 Obviously, most buyers are accountable for many acquisition transactions.
- 3 She (Suzy Petroni) has not acquired any raw materials yet.



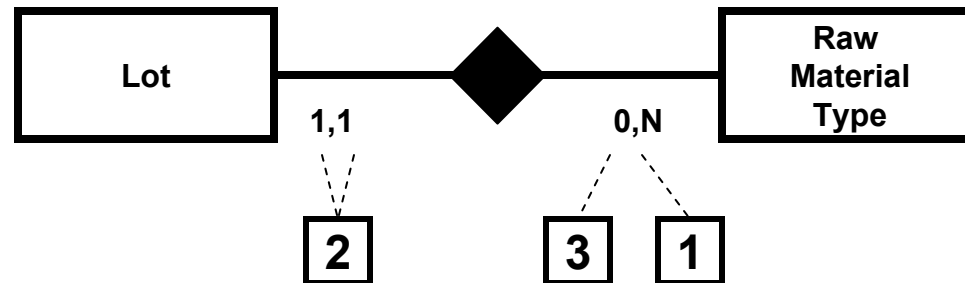
- 1 We assign one “main” buyer to each (certified) vendor.
- 2 About 75% of the vendors in our database are certified vendors.
- 3 In addition we assign two “assistant” buyers to each (certified) vendor.
- 4 Jimmy Rodriguez is exclusively assigned as a “main” buyer to “Hockessin Meat Supply”, one of our biggest vendors. Stated differently, Jimmy works with (is assigned to) only one vendor as a “main” buyer and he does not work as an “assistant” buyer with any other vendors.
- 5 We hired Suzy Petroni as a buyer last week. Currently, she is assigned as an “assistant” buyer to one vendor only: “Wilmington Meat and Poultry.”
- 6 Skip Pollack is a main buyer for four different vendors and an assistant buyer for three different vendors.



- 1** We can buy (acquisition) multiple lots at the same time.
- 2** There is at least one lot per acquisition.
- 3** There is exactly one acquisition for each lot.



- 1 For example, the acquisition with number “2345C12” has 2 lots; lot 1: 1700 pounds (quantity) of pork (raw material type), and lot 2: 2500 pounds (quantity) of chicken (raw material type); the acquisition with number “6385P08” has 3 lots; lot 1: 200 pounds (quantity) of beef (raw material type), lot 2: 100 pounds (quantity) of pork (raw material type), and lot 3: 150 pounds (quantity) of tofu (raw material type).
- 2 There is exactly one raw material type per lot.
- 3 We would actually like to put raisins in our sausages – small amounts of raisins make the color of sausages darker and their taste sweeter. We have entered raisins as a raw material type in our database. However, we haven’t bought any raisins yet.



1

We record explicitly what raw material types can be stored in each of the areas (our storage policy) – for example, we never store pork and chicken in the same area.

2

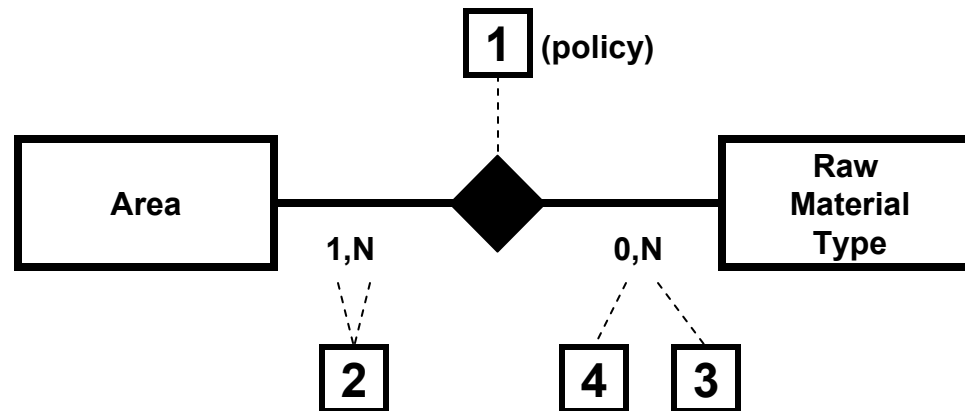
At least one raw material type can be stored in each area

3

.... and a raw material type can be stored in more than one area.

4

We haven't decided yet in which areas we can store raisins.

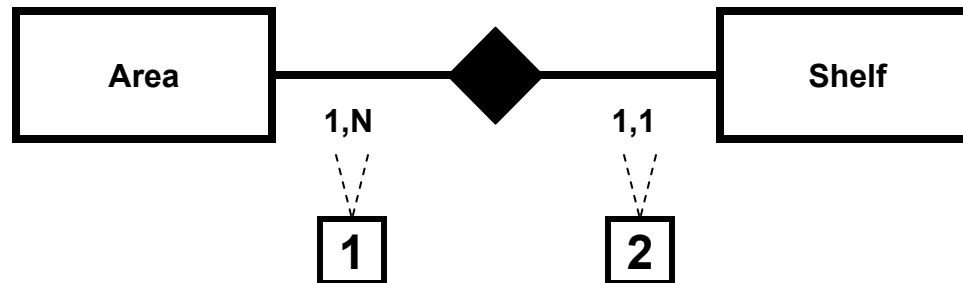


1

Each area is further subdivided into a number of shelves.

2

Each shelf belongs to exactly one area.



1

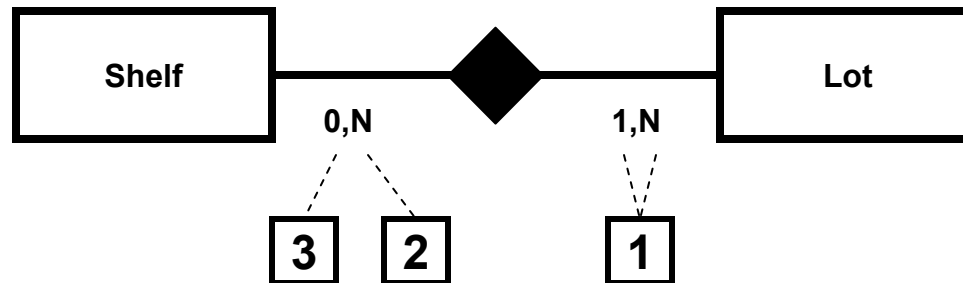
For each lot we record the shelves where the materials are stored. At least one shelf is needed to store the materials that are part of a lot.

2

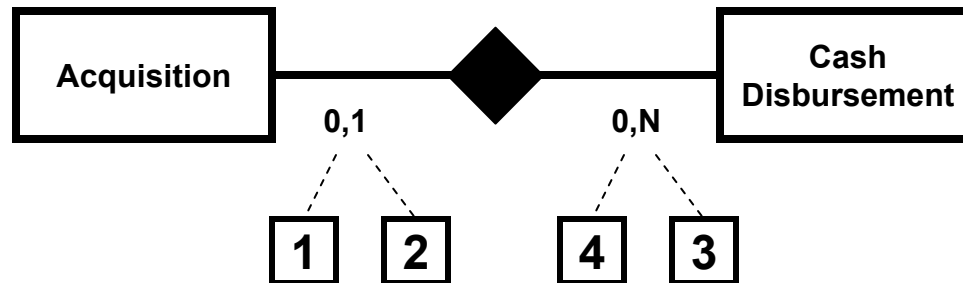
The same shelf can contain materials from more than one lot – as long as we don't violate the storage policies.

3

We have empty shelves all the time. Actually, some of our shelves have not been used yet.



- 1 We pay the full amount (for an acquisition transaction) within thirty days;
- 2 no installments.
- 3 For most vendors, we have multiple acquisition transactions during the month and we pay for all of them with one check (cash disbursement) at the end of the month.
- 4 Not all payments pay for acquisitions.

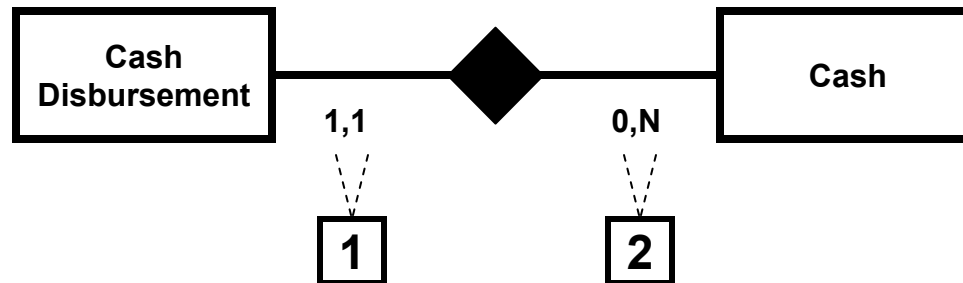


1

Obviously, we record exactly one account for each payment (cash disbursement).

2

We have two accounts. We use the same account for all our payments (cash disbursements).



- 1 Obviously, we record exactly one vendor ... for each payment (cash disbursement).
- 2 We actually keep information for (a) certified vendors, (b) non-certified vendors, and (c) vendors that are going through the certification process. Remember that we can only buy raw materials from certified vendors.
- 3 We made payments to “Wilmington’s Exotic Animals Farm” this month and last month.

