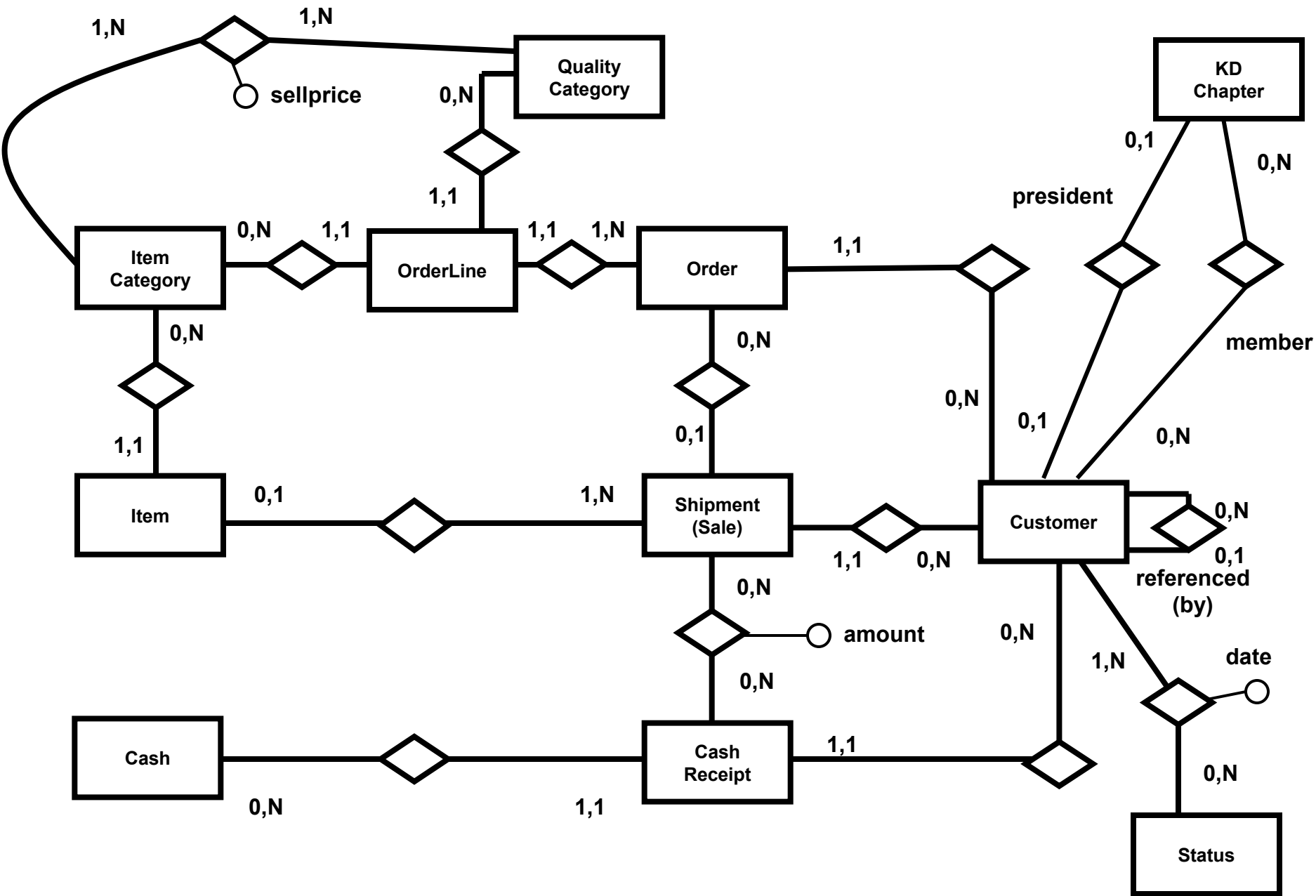




KaDo
REVENUE CYCLE

SOLUTION PACKAGE



Integrated Solution

(A)

All money received is deposited into the same account.

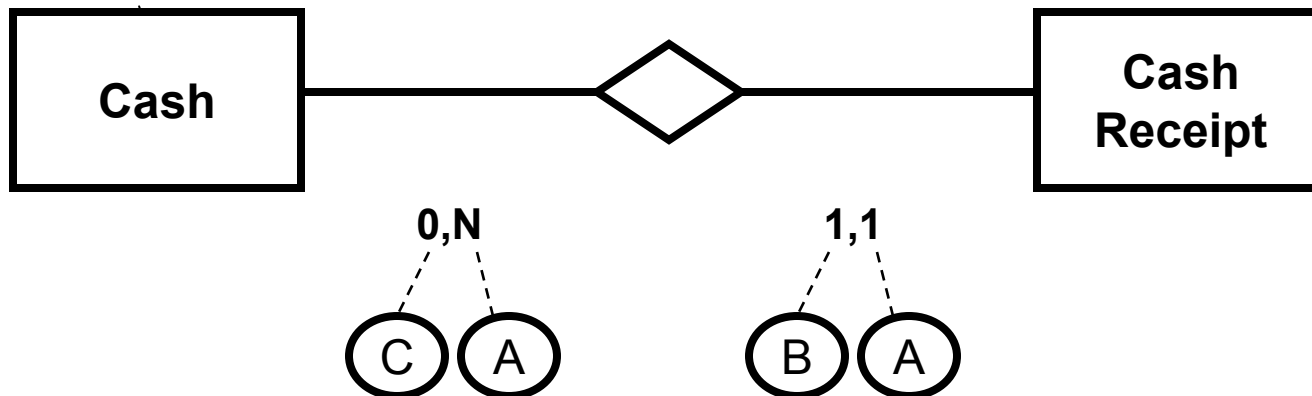
(B)

It is impossible to record a cash receipt transaction without recording the transaction's account.

(C)

KaDo actually has a second account. There are no transactions for the second account yet. This account will never be used for cash receipts.

Accounts are instances of the Cash entity



A

KaDo accepts pre-payments

B

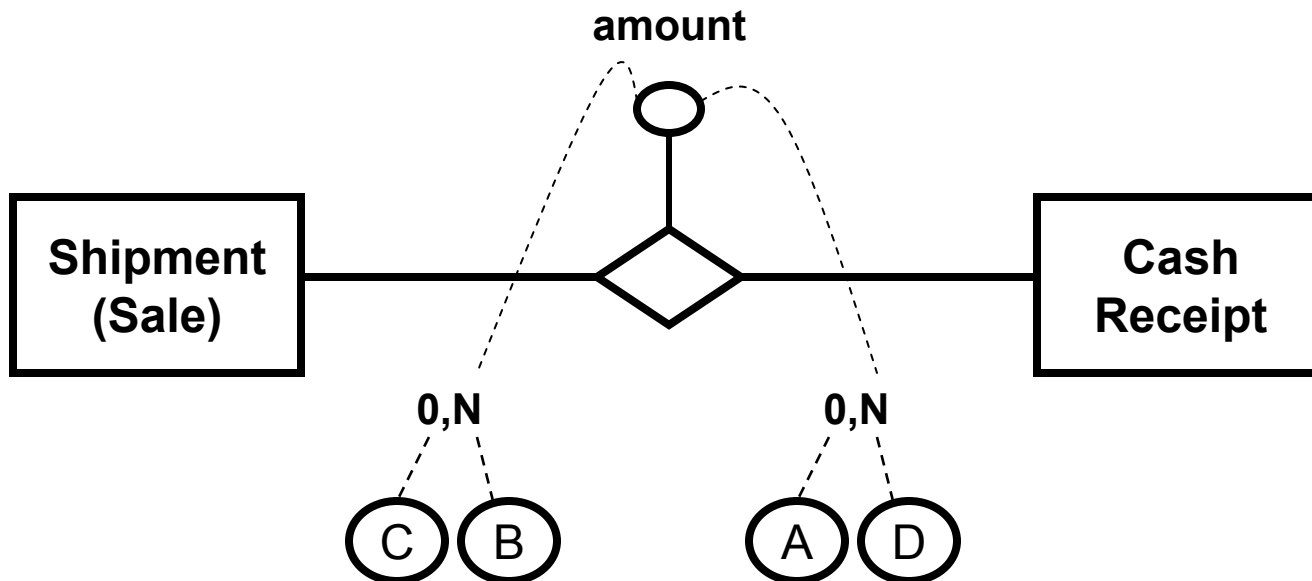
KaDo accepts pre-payments and installments

C

no down payments are required for credit sales

D

Sometimes, customers make payments that apply to multiple shipments.



A

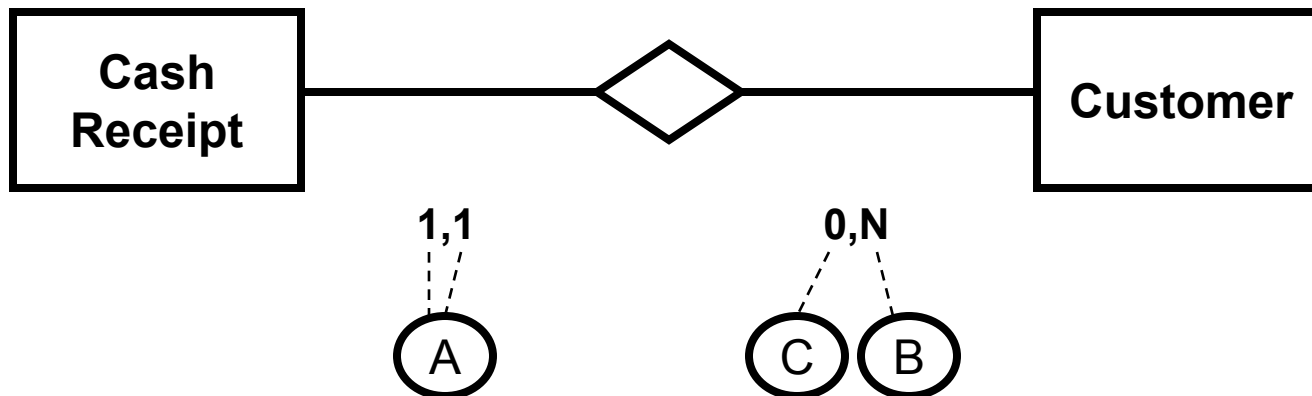
There is exactly one customer per cash receipt.

B

.... , and the same customer can pay more than once.

C

“Some customers haven’t ordered or bought (sale) any items yet” →
As a result, some customers have not made any payments yet.



A

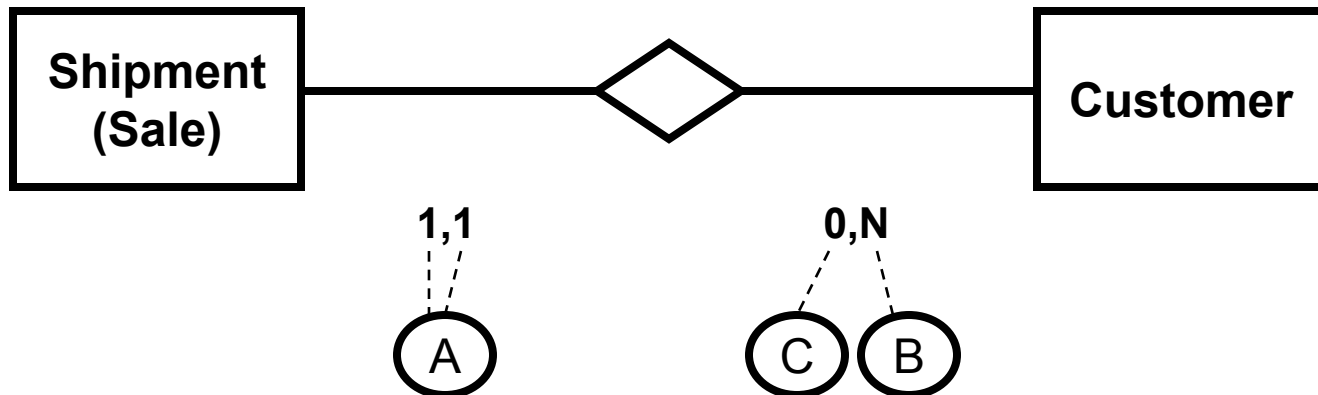
There is exactly one customer per shipment.

B

.... , there can be many shipments for the same customer.

C

Some customers haven't bought (sale) any items yet.



A

Partial shipments are common.

B

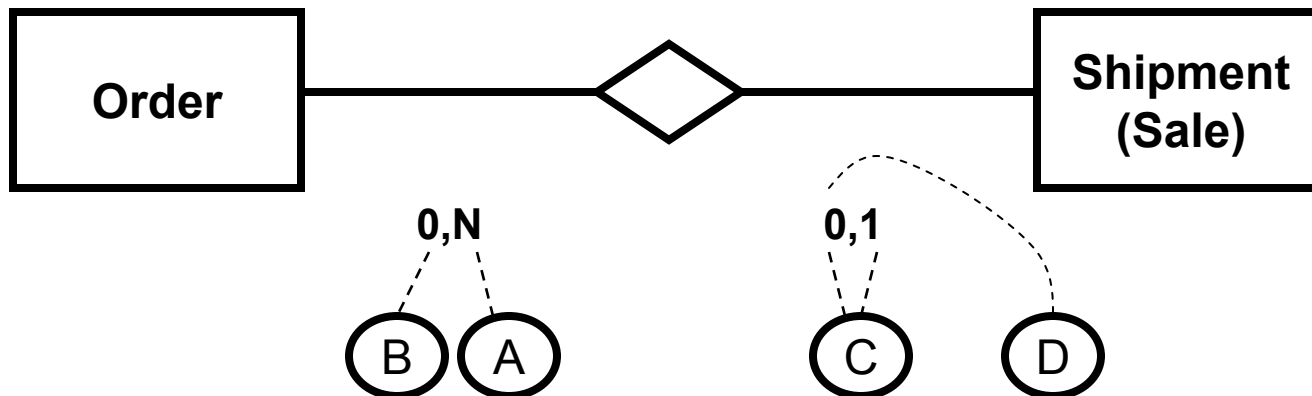
It often takes more than 2 weeks to ship the dolls.

C

There is at most one order per shipment.

D

First, customers can simply walk into the store, select one or more items from the shelves, and pay for them. **There are no orders.**



A

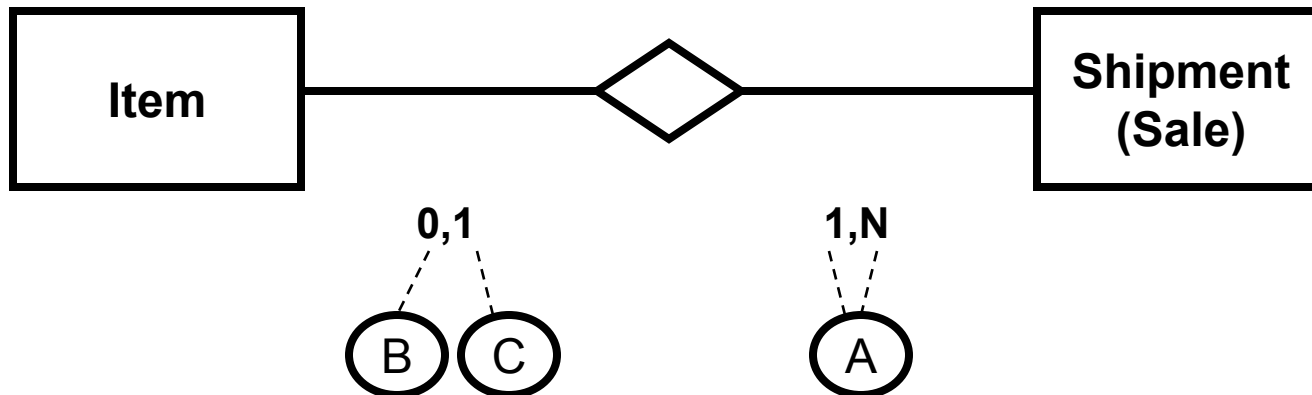
There is at least one item per shipment.

B

KaDo has currently more than 500 items in stock; i.e., items not sold to a customer yet.

C

All items have a unique tag-number.



A

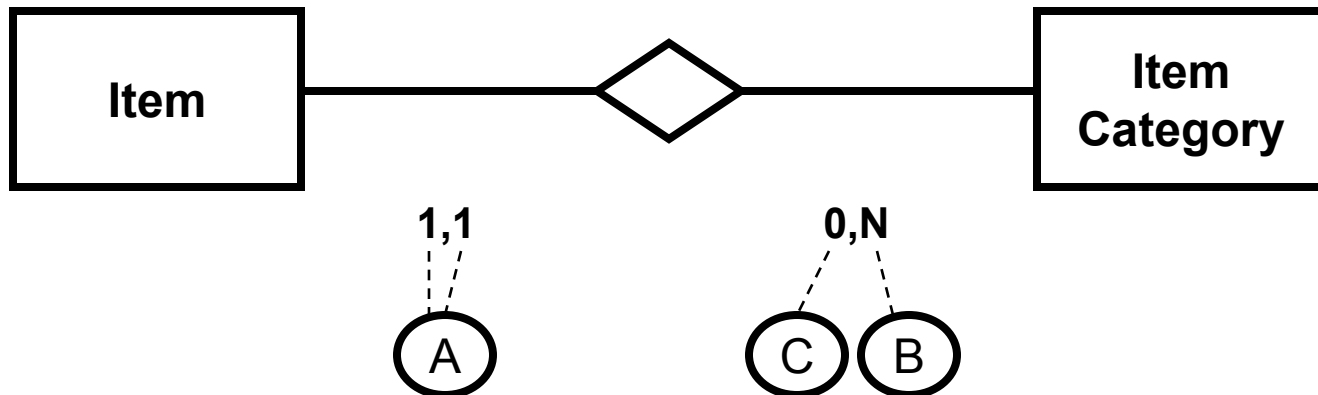
There is exactly one item category for each item.

B

KaDo has currently more than 50 items of type "HEE" available.

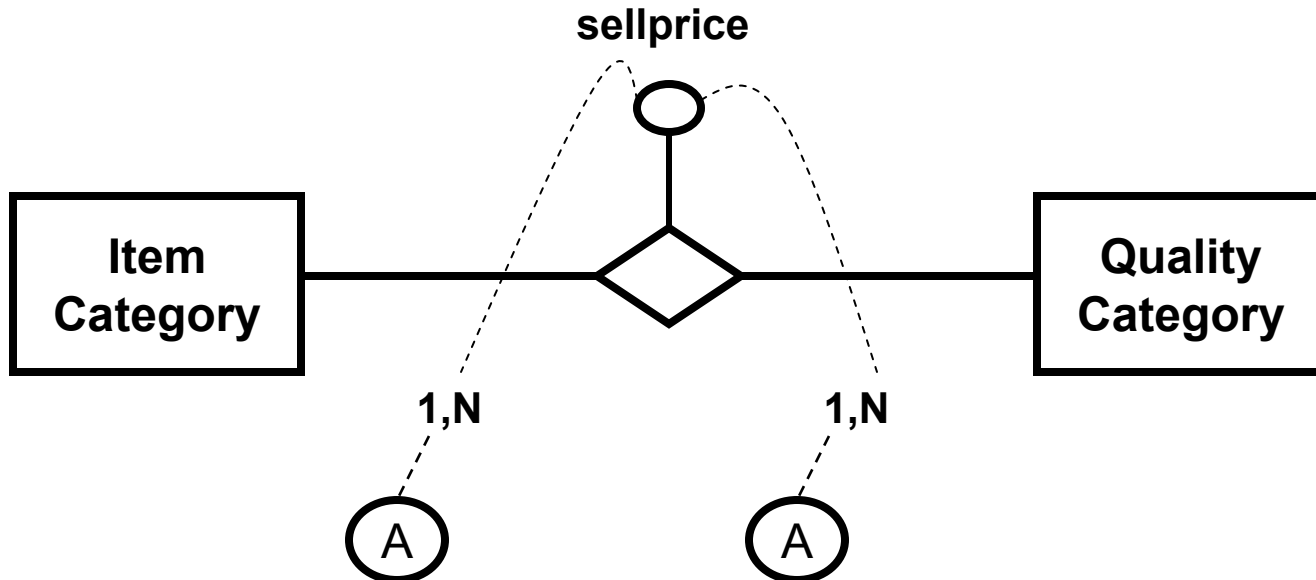
C

However, "SPI" is a new category and KaDo does not have SPI items yet.



A

Ashley and Mark determine (and record) a price for **each** possible combination of Item Category and Quality Category.



(A)

There is exactly one item category for each order-line.

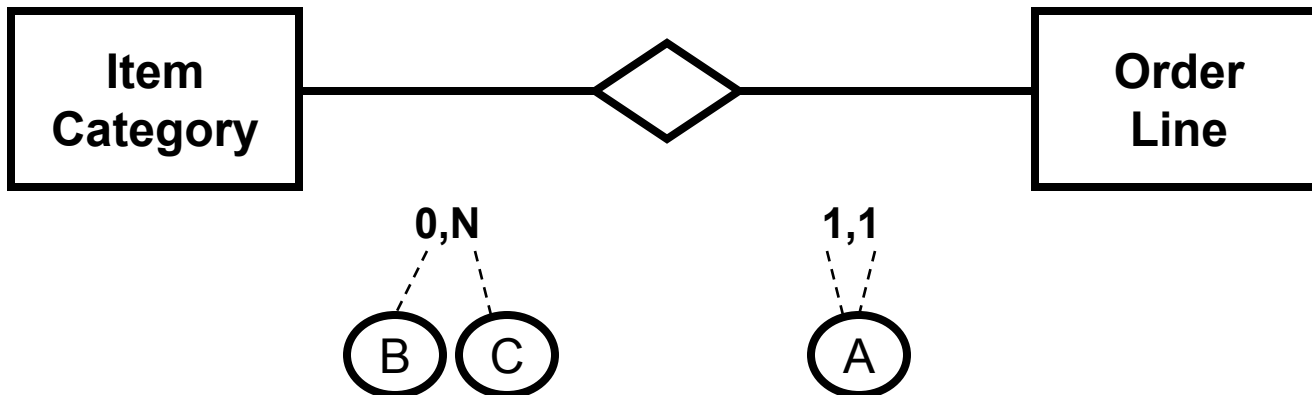
(B)

Thus far, no one has ordered items of item category "SPI" (Spider) yet.

(C)

The example (instances) shows that the same item category (HOS) can occur on more than one order-line.

Instances of OrderLine			
Order	ItemCategory	QualityCategory	Quantity
1	HEE	4	3
1	HOS	4	3
1	KWE	4	3
1	NUV	3	3
1	WAK	4	3
1	WUY	4	3
2	KOC	1	1
2	KOC	3	1
2	HOS	5	1

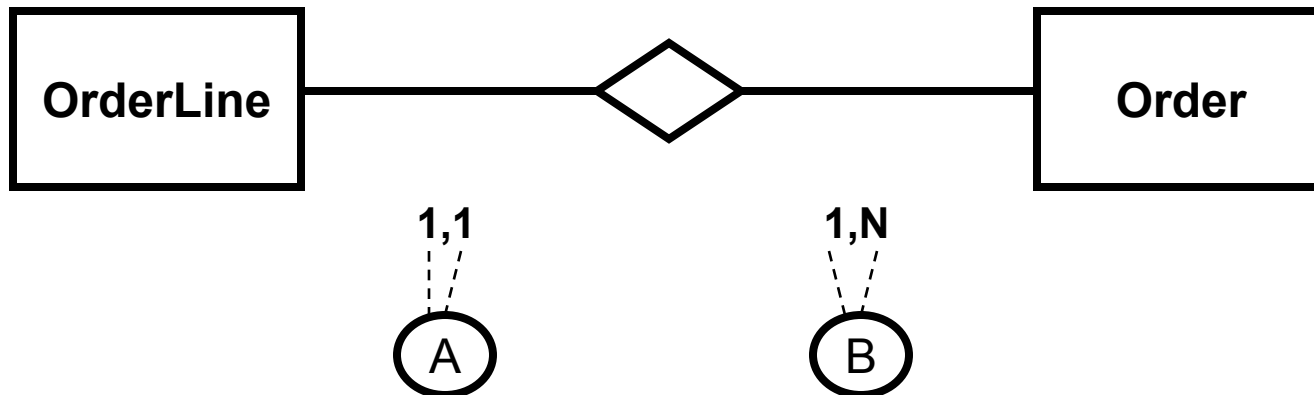


A

There is exactly one order for each order-line.

B

There is at least one order-line per order. Stated differently, it is impossible to have orders without order-lines.



A

There is exactly one quality category for each orderline.

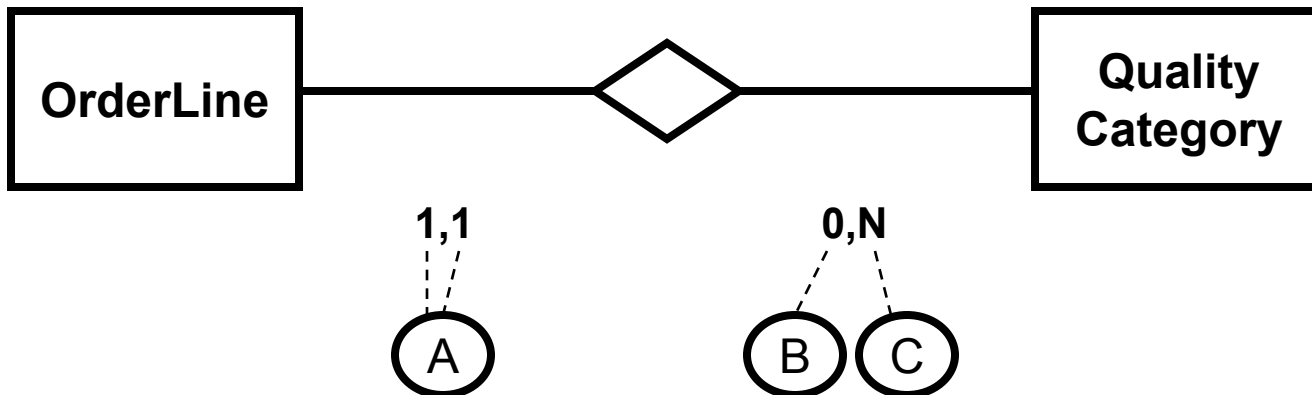
B

It should be possible to add new quality categories – e.g., quality category “6” – before they are included on an order-line.

C

The example (instances) shows that the same quality category (3) can occur on more than one order-line.

Instances of OrderLine			
Order	ItemCategory	QualityCategory	Quantity
1	HEE	4	3
1	HOS	4	3
1	KWE	4	3
1	NUY	3	3
1	WAK	4	3
1	WUY	4	3
2	KOC	1	1
2	KOC	3	1
2	HOS	5	1



A

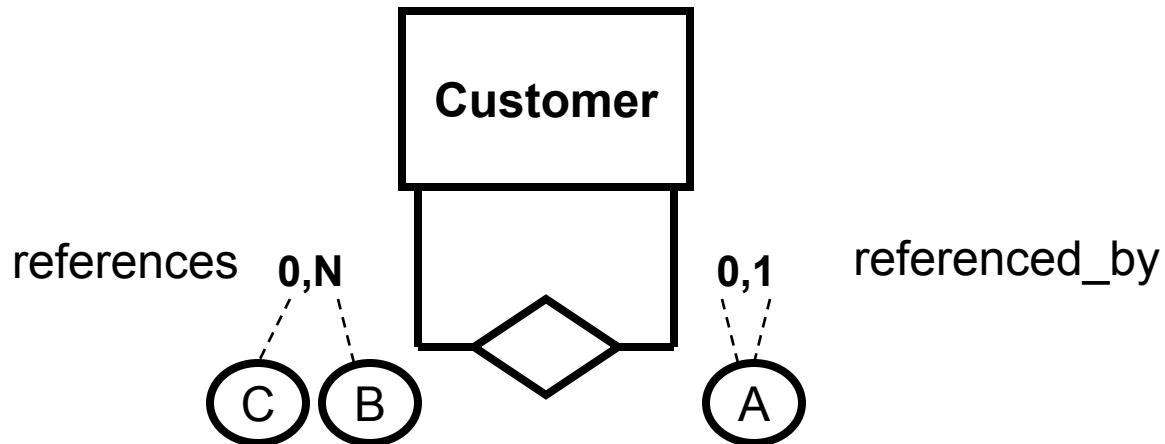
A customer can be referenced by at most one other customer.

B

.... but a customer can reference many customers.

C

Not all customers reference other customers.



(A)

All customers are assigned a status code (A,B,C,D,E).

(B)

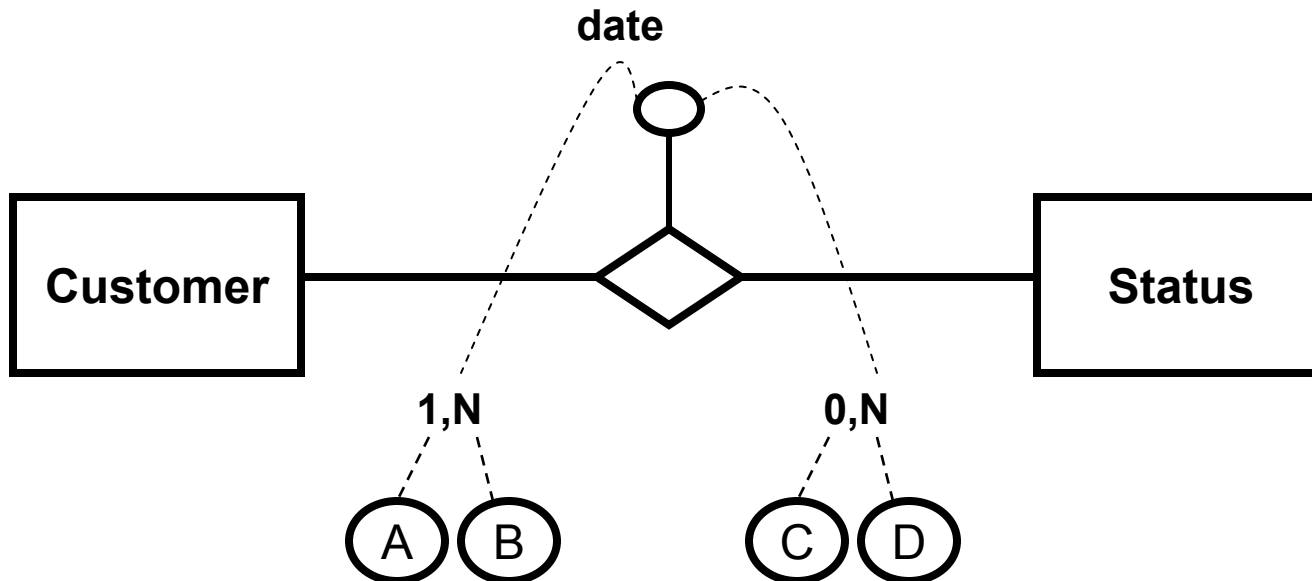
KaDo would like to track (record) the status **history** of customers. For example, Jerome Ekaf received status "A" on 9/1/2006, received status "B" on 3/12/2007, and received status ("C") last week (9/14/2007).

(C)

Nobody has reached status E (the highest possible) yet.

(D)

However, 4 customers have currently status "D."



A All KD chapters have the same organizational structure: they have one president. KaDo is only interested in recording the current information (current members and **presidents**) → KaDo records only the current and thus **one** president.

B All KD chapters have the same organizational structure: they have one president and a **number of members**, However, one chapter has 25 of KaDo's customers as members.

C Only 25% of KaDo's customers are involved with KD chapters

D For seven (and thus 50%) of the KD chapters, the president is one of KaDo's customers.

E The KD chapters have an agreement that the same person can't be president of more than one chapter.

F However, the same person can be a member of different KD chapters.

G There are currently two KD chapters with none of KaDo's customers as members.

